



## **OWNER'S MANUAL & WARRANTY**

### **CLEARVIEW FOOD SHIELDS**

---

### **LIGHTS & WARMERS**

## TABLE OF CONTENTS

Important Owner Information .....	2	<b>Lights and Warmers</b>	
Safety Precautions .....	3	Receiving and Inspecting Equipment .....	8
Receiving and Inspecting the Equipment.....	3	Cleaning Instructions .....	9
ClearView Models.....	3	Identifying Your Product.....	9
Mounting Options.....	4	Changing the LED Bulb.....	9
Clip Installation.....	5	Replacing the Tubular Heating Elements....	10
Silicone Installation.....	6	Parts & Service.....	10
Custom Clamp Installation.....	6	Wiring Installations.....	11
		Wiring Diagrams.....	12
		Warranty.....	13

This manual is an important part of your equipment. Your owner's manual should be stored in a safe location, as it will be useful for the life of your product. It contains important safety information concerning the maintenance, operation, and servicing of these products.

Failure to properly use this manual may result in serious injury. Do not operate this equipment unless you have read and understood the contents of this manual.

## IMPORTANT OWNER INFORMATION

Record the serial number(s) of your ClearView guards as a reference when contacting your local representative or BSI headquarters.

Serial No.:	
Serial No.:	
Date of Purchase:	
Other:	

### BSI Corporate Contact Information

Business Hours: 8:00 AM to 5:00 PM MST

Telephone: 800.662.9595  
Fax: 303.331.8444

Web Address: [www.bsidesigns.com](http://www.bsidesigns.com)

## SAFETY PRECAUTIONS



The ClearView food shield must be installed in accordance with applicable installation codes by a person familiar with the product's construction, operation, and potential hazards involved.

## RECEIPT AND INSPECTION OF EQUIPMENT

To ensure the best possible product quality and service while minimizing project delays, a BSI-authorized freight carrier must be utilized for all shipments containing Clearview UV-bonded food shields.

1. Visually inspect the package, skid, or container exterior. To assist in identification of transit damage, multiple view ports have been added to shipping crates. Any damage should be noted on the carrier's bill of lading and reported to BSI within 24 hours of receipt.
2. In the event that damage is discovered, notify the carrier and request freight damage forms.
3. Request an inspection by the shipping company of the damaged equipment. This should be done within 10 days of equipment receipt.
4. Retain all crating materials until an inspection has been made or waived.

## CLEARVIEW MODELS

ClearView food shields are manufactured in many different configurations. While the components are similar, your model's glass may not be. The models shown below should be maintained in the same manner based on the instructions within this manual.



CV100-1



CV100-2



CV100-3



CV100-4



CV100-5



CV100-6

**All ClearView models  
are certified by NSF.**

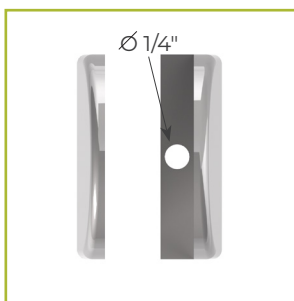
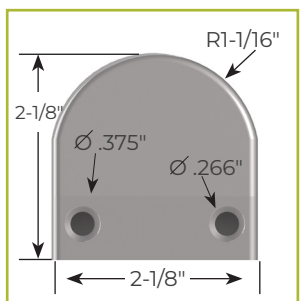
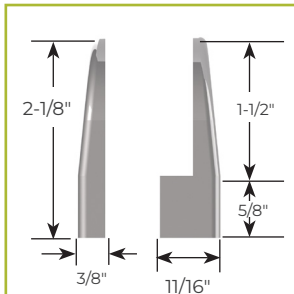


## MOUNTING OPTIONS

### 3/8" ROUND CLIP

#16159 Satin Stainless

#16604 Polished Stainless

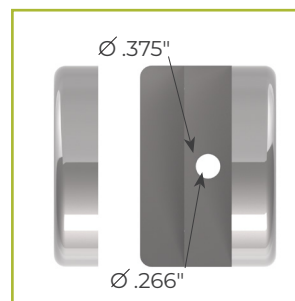
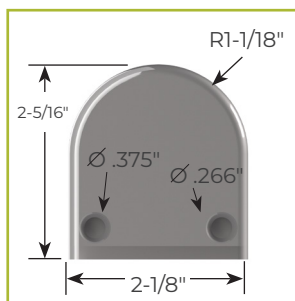
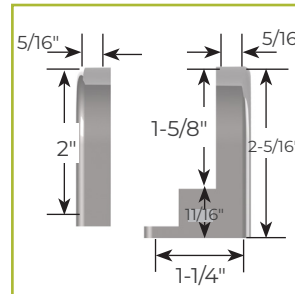
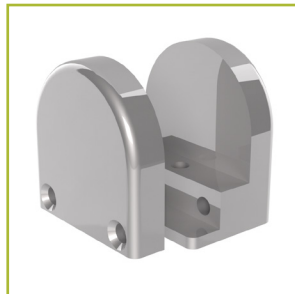


1/4-20 x .62 Long Flat Head (Hex) Machine

### 1/2" ROUND CLIP

#16266-A Satin Stainless

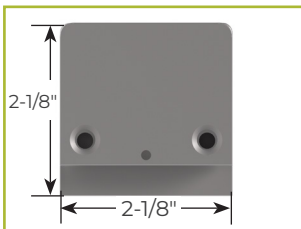
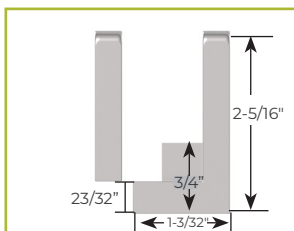
#16266 Polished Stainless



1/4-20 x .62 Long Flat Head (Hex) Machine

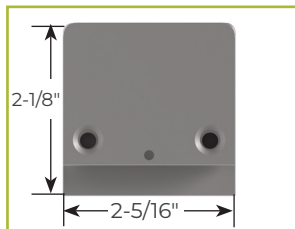
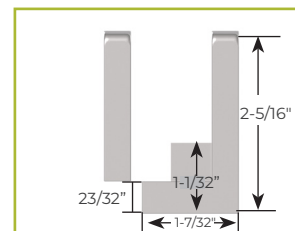
### 3/8" SQUARE CLIPS

#16754 Satin Stainless



### 1/2" SQUARE CLIPS

#16471 Satin Stainless

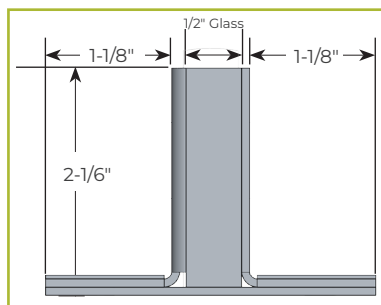
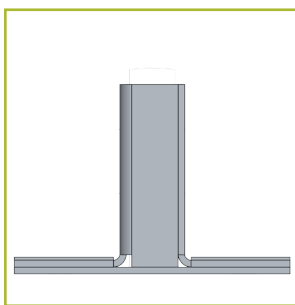


### FLUSH TO COUNTER, SEALED WITH SILICONE



© BSI, LLC 2016

### CUSTOM CLAMP (SECURED TO COUNTER)



## CLIP INSTALLATION

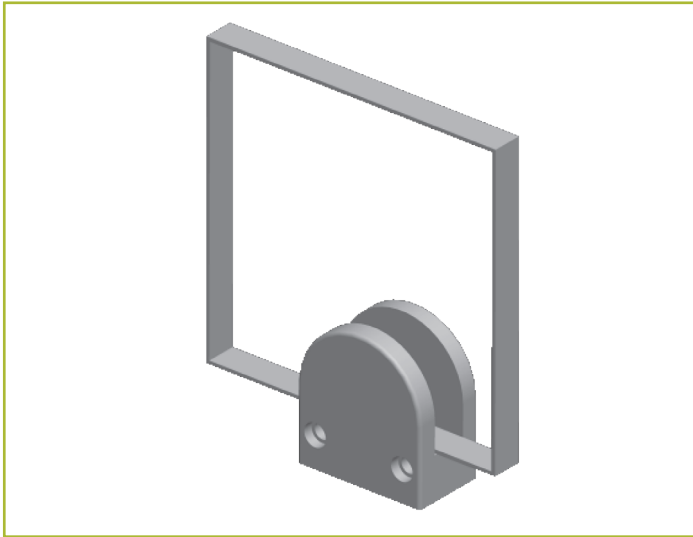


Figure 1

### CLIP ASSEMBLY AND PARTS

- Using an allen/hex wrench, remove the two side screws (Figure 1).
- Discard the plastic shipping brace between the two clips.
- Keep the rubber inserts that are attached to the clips. They are needed to properly secure the glass.
- You will need to provide your own screws to secure to the countertop (see chart below).

### PREPPING COUNTER SURFACE

- Clean countertop and food guard where they will meet with isopropyl alcohol. Make sure all surfaces are clean and free of dust.

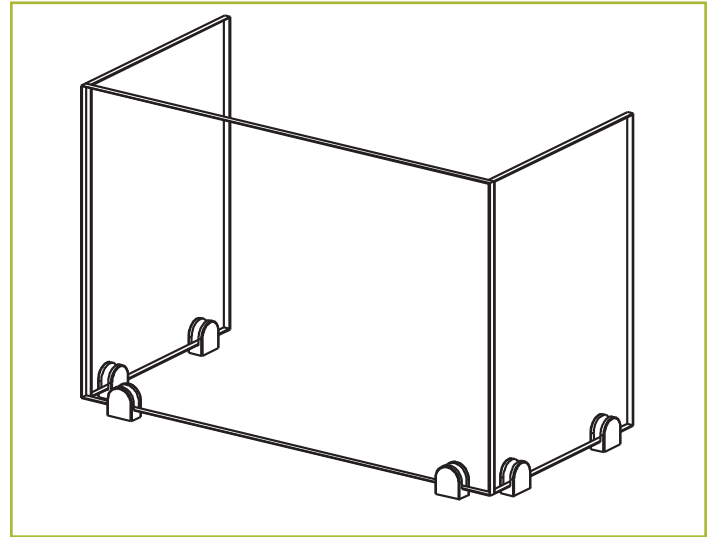


Figure 2

*Rendering of Glass Panel in Clip*

### CLIP AND GLASS INSTALLATION

*BSI recommends that two people install ClearView guards.*

- Position clips on glass in desired location and secure to glass (Figure 2).
- BSI recommends placing a glass clip 4" in from each end of the glass panel edge (Figure 2). For panels longer than 48", add a third clip in the middle of the span for support
- Place clipped glass in location on counter. While carefully balancing the glass, mark the glass position with tape on the counter.
- Carefully set glass aside and remove clips.
- In the taped off areas, pre-drill the screw holes.
- Screw half of the clip securely to the counter.
- Screw the other half of the clip into position, but do not tighten entirely.
- Carefully align glass panel(s) between the clips and tighten screw completely.

Counter Material	Recommended Hole/Screw (screw length based of counter thickness)
Stainless Steel Top	10-32 machine screw drilled and tapped into the top
Solid Surface	Clearance hole through the solid surface with a #10 wood screw into the subtop
Quartz/Stone	Clearance hole through the top with a #10 wood screw into the subtop

## SILICONE INSTALLATION

For installations using silicone that adheres to the countertop, contact BSI at 800.662.9595 for details.

## CUSTOM CLAMP INSTALLATION

### STRAIGHT GLASS PANELS

The maximum length of a 3/8" glass panel is 66". For straight glass spans, the clamp is screwed directly to the counter. An optional stainless steel screw cover can be siliconed to the clamp, hiding the screw head (Figure 3).

Using silicone in the clamp channel, secure the glass panel (Figure 4).

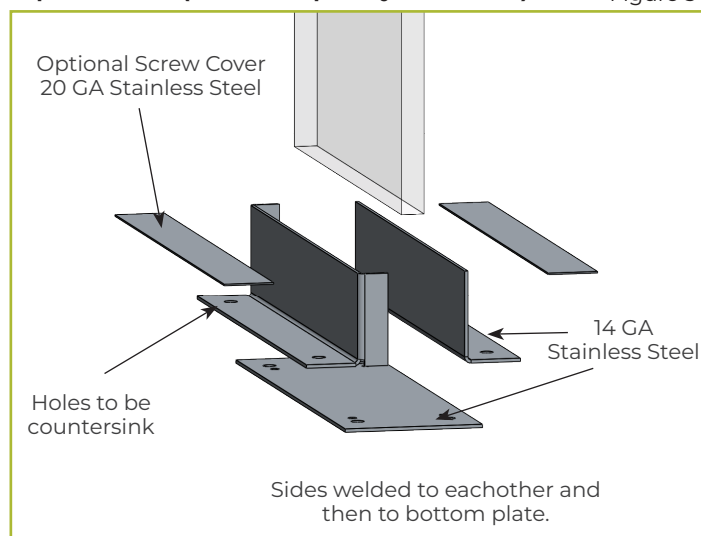
For straight spans exceeding 66", panels are shipped in multiple pieces. After attaching the clamp to the counter, use silicone to secure the glass panel both in the channel and to the glass next to it (Figure 5).

### CURVED OR BENT GLASS PANELS

Depending on lengths, glass panels may arrive prebonded or as separate sections to be siliconed in the field. Each section is screwed to the counter. Glass panels are then siliconed in the channel and to each other if not already bonded.

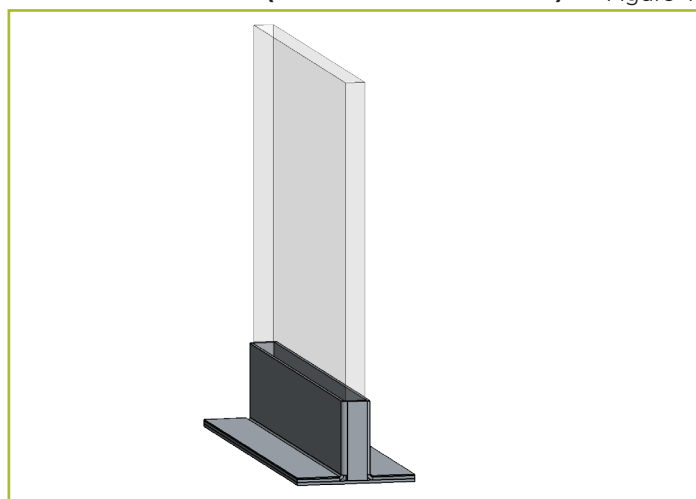
Exploded View (bracket ships fully assembled)

Figure 3



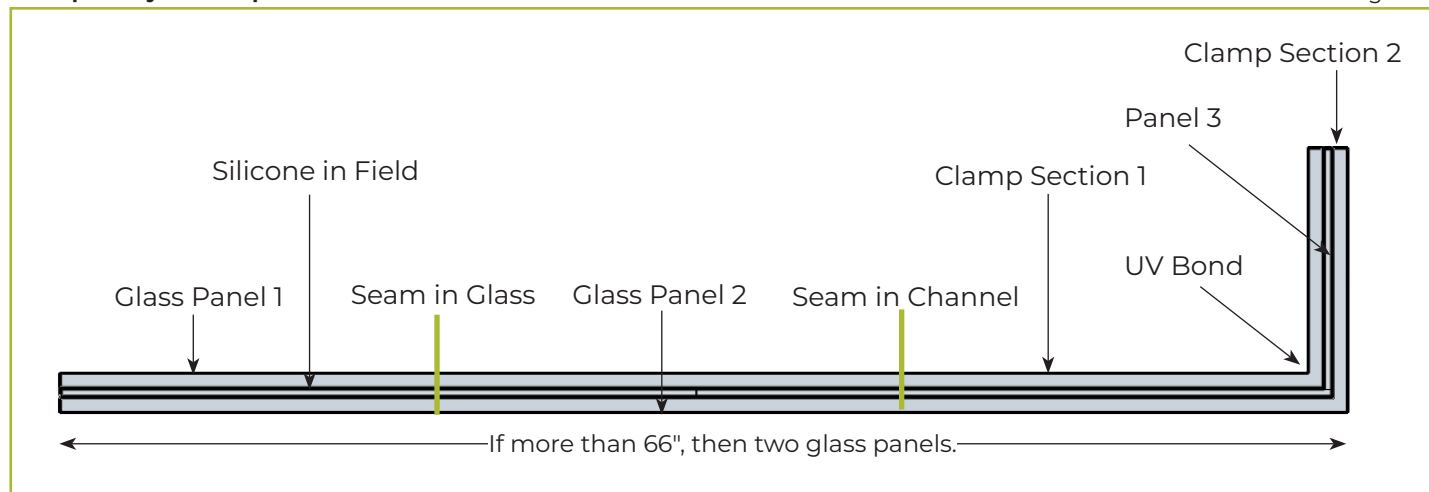
Assembled Installation (shown with screw covers)

Figure 4



L-Shaped Layout Sample

Figure 5





# **OWNER'S MANUAL**

---

## **LIGHTS & WARMERS**

## LIGHTS & WARMERS

Food shield systems can be built with lights, warmers, or a combination of the two. Proper maintenance for these products is very important for safety. The following pages will detail the proper methods of keeping your product clean, how and where to exchange parts, and includes diagrams for proper wiring.

## RECEIVING AND INSPECTING THE EQUIPMENT

Care should be taken during unloading and uncrating to avoid equipment damage.

1. Visually inspect the package, skid, or container exterior. Any damage should be noted and reported to the delivering carrier immediately.
2. Open and inspect contents for broken glass and verify that all items were received.
3. In the event that damage is discovered, notify the carrier and request freight damage forms.
4. Request an inspection by the shipping company of the damaged equipment. This should be done within 10 days of equipment receipt.
5. Retain all crating materials until an inspection has been made or waived.



ALL LIGHTS, WARMERS AND COMBO UNITS ARE SHIPPED USING ZIP TIES TO SECURE UNITS DURING TRANSIT. AFTER INSTALLATION, CAREFULLY REMOVE ALL ZIP TIES.

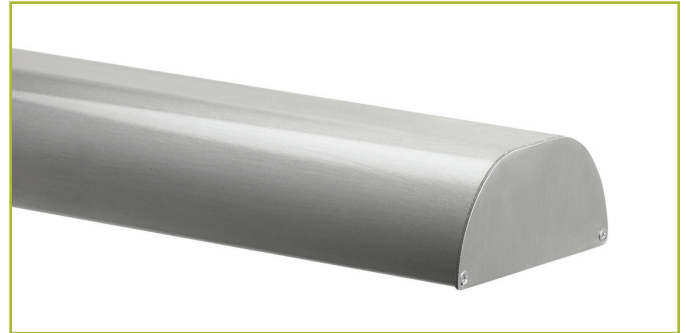


Lights and warmers must be installed in accordance with the applicable installation code by a person familiar with the product's construction, operation, and potential hazards involved.

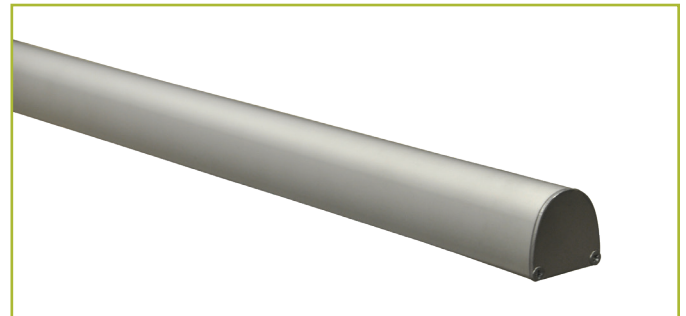
All light and warmer models are certified by NSF.



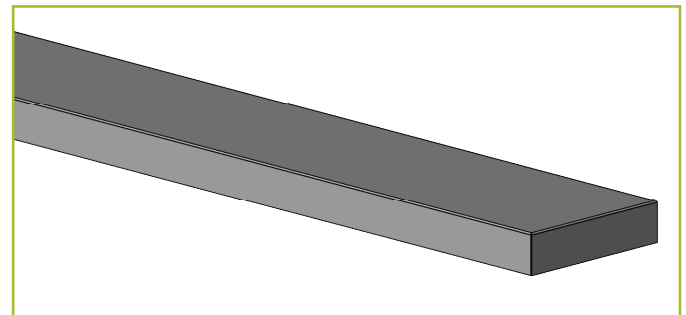
## MODELS



Stealth Warmer & Light Combo Model 705  
Stealth Warmer Model 790



Slimline Light Model 2580



Stealth Heat/Light/Heat Combo Model 500



## CLEANING INSTRUCTIONS

Once your food guard has been properly installed and you have removed all zip ties, it will be important to keep your light, warmer, or combo unit clean to prolong the life of the product.

BSI recommends the following for keeping your product clean:

- Be sure to turn the power off before cleaning. Wait until Stealth warmer is cool. **Cleaning when the warmer is hot can cause staining or damage to food warmer finish.**
- Wipe the surface with a clean, damp cloth to remove fingerprints, dust, etc.
- Spray with a light coating of glass cleaner to remove grease or other dirt. Use a non-ammonia cleaner.
- Be sure not to spray any cleaning product directly into the bulbs, fixtures, or heating elements.

## IDENTIFYING YOUR PRODUCT

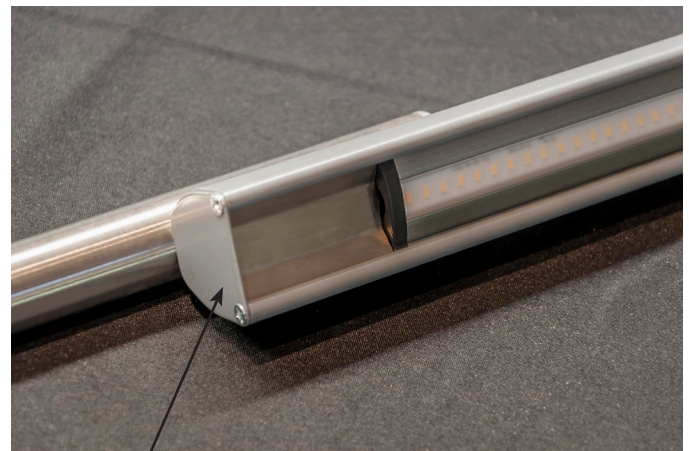
Each BSI light, warmer, or combo unit contains an identification sticker. This sticker provides the customer with the following information:

- Serial Number
- Model Number
- Manufacture Date
- Electrical Information



## CHANGING THE LED BULB

- Turn off power to all lights and warmers.
- Carefully unscrew the end plate and slide out the entire LED light.
- If multiple lights are connected to each other, carefully disconnect serial connector or power connector.
- Once dead light bulb is removed, replace with new LED light. Carefully reconnect the connector and slide in the light bar.
- Replace end cover and two screws.



End Plate

## LED LIGHTS

Part #	Description
16289	Kelly LED:_12"_LED_Light_Bar
16290	Kelly LED:_18"_LED_Light_Bar
16292	Kelly LED:_36"_LED_Light_Bar
16505	Kelly LED:_48"_LED_Light_Bar
16293	Kelly LED:_10'_Power_Cord_w/o_Plug
16294	Kelly LED:_Serial_Connector
16295	Kelly LED:_6" Power_Connector

## HEATING ELEMENTS

Part #	Description
492-18-BK	Element:_18"_120V_Heater_350W
492-24-BK	Element:_24"_120V_Heater_500W
492-30-BK	Element:_30"_120V_Heater_660W
492-36-BK	Element:_36"_120V_Heater_800W
492-42-BK	Element:_42"_120V_Heater_950W
492-48-BK	Element:_48"_120V_Heater_1100W
492-54-BK	Element:_54"_120V_Heater_1250W
492-60-BK	Element:_60"_120V_Heater_1400W
492-66-BK	Element:_66"_120V_Heater_1560W

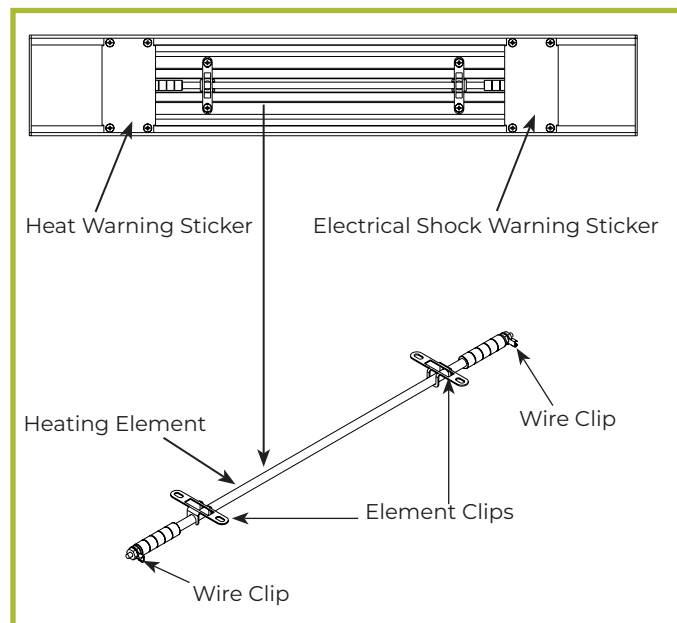
Part #	Description
496-24-BK	Element:_24"_208V_Heater_500W
496-30-BK	Element:_30"_208V_Heater_660W
496-36-BK	Element:_36"_208V_Heater_800W
496-42-BK	Element:_42"_208V_Heater_950W
496-48-BK	Element:_48"_208V_Heater_1100W
496-54-BK	Element:_54"_208V_Heater_1250W
496-60-BK	Element:_60"_208V_Heater_1400W
496-66-BK	Element:_66"_208V_Heater_1560W

240V Heat Elements are a special order item.  
Contact BSI at 1.800.662.9595 to order.

## REPLACING THE TUBULAR HEATING ELEMENTS

On all three Stealth warmer units, the tubular heating element can burn out — similar to a light bulb.

Replacement should be done by a professional service technician. If you have additional questions, contact BSI at 1.800.662.9595.



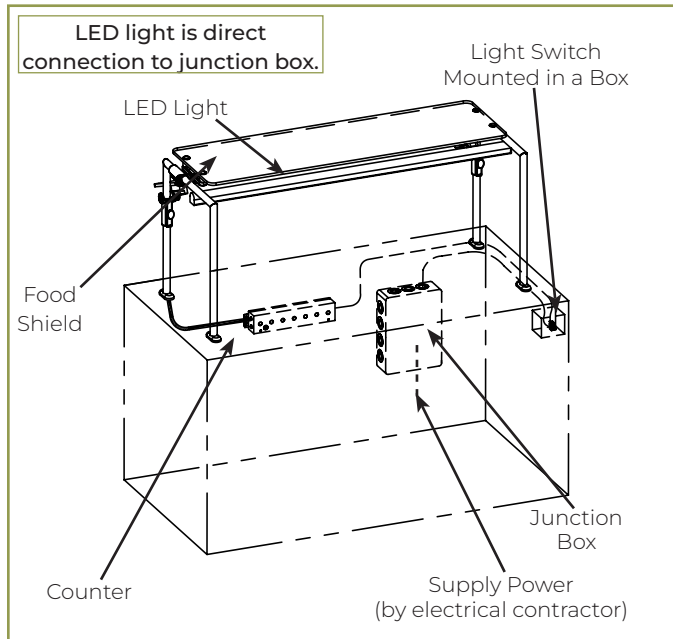
## PARTS & SERVICE

In the event your lights or warmers require major repairs, contact your local installer for assistance.

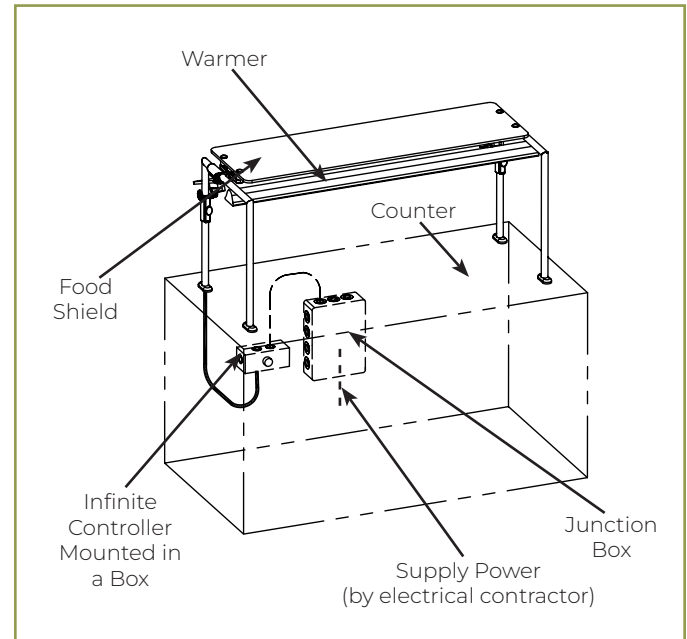
If you have product questions or need minor replacement parts, contact BSI at 1.800.662.9595.

## WIRING INSTALLATIONS

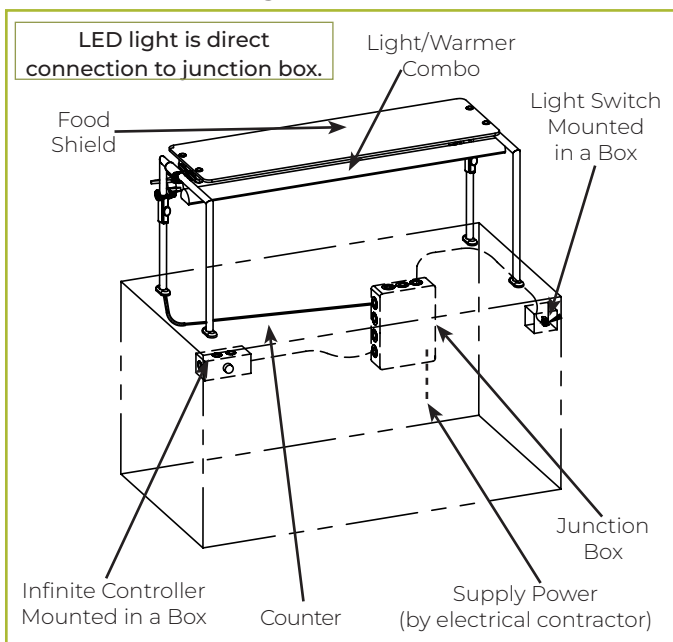
### Slimline 2580 LED Light



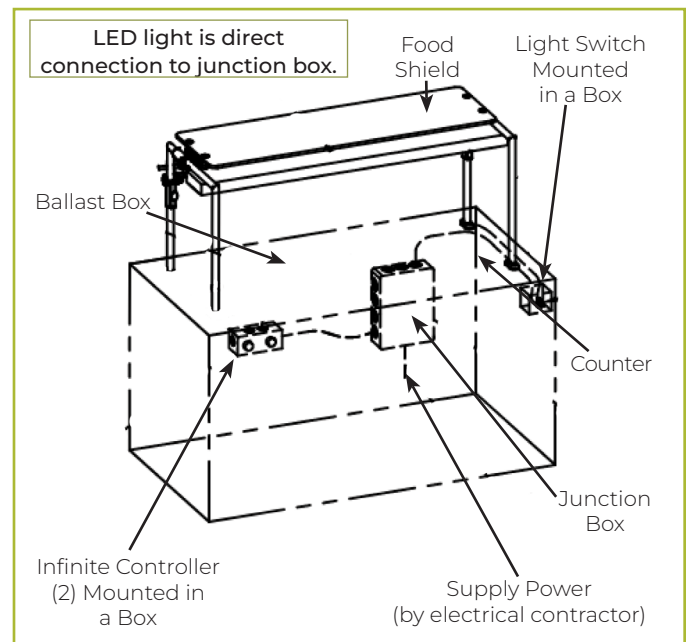
### Stealth 790 Warmer



### Stealth 705 LED Light & Warmer Combo



### Stealth 500 LED Heat/Light/Heat Combo

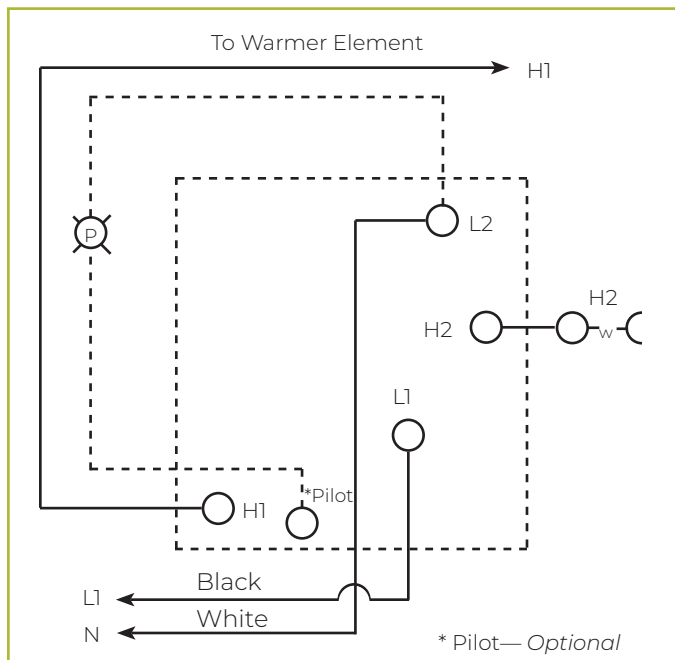


## INSTALLATION INFORMATION

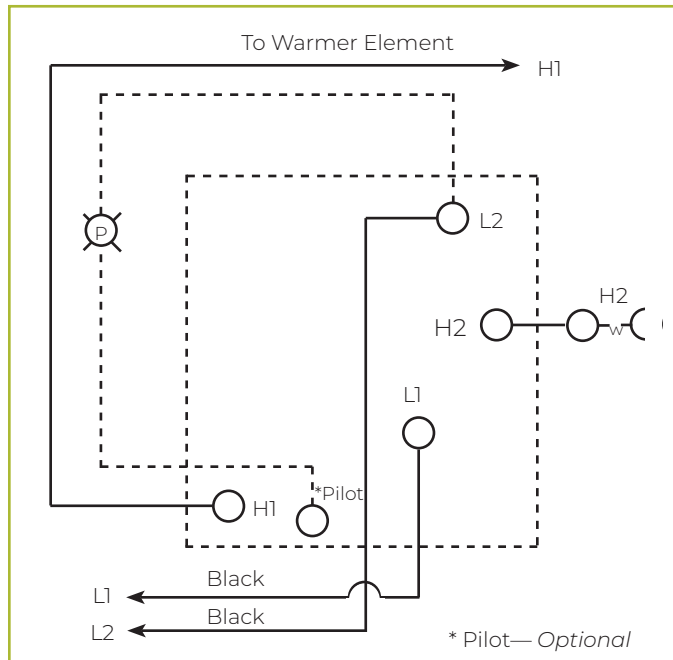
- All wiring should be performed by a certified technician.
- Wires are routed through wire chase/support legs per approved shop drawings.
- Mount the infinite controllers near the wire chase/support leg.
- The infinite controllers, light switch, and six feet of conduit/wiring exiting support legs are provided with all BSI lights & warmers.

## WIRING DIAGRAMS

### Remote Infinite Control for Stealth Warmer/Combo Units



Infinite Switch (120V) - Part #581



Infinite Switch (208V/240V) - Part #582

## **BSI, LLC WARRANTY**

BSI, LLC warrants its products to be free of material and workmanship defects under normal use from the date of original purchase and for the applicable warranty periods set forth below. BSI, LLC's warranty extends only to original purchasers acquiring new products purchased in the United States directly from BSI, LLC, its authorized dealers, or other companies specifically authorized by BSI, LLC to act as resellers of its products.

### **CLEARVIEW**

BSI, LLC warrants the ClearView system against material and workmanship defects for a period of two years from invoice date. This excludes post-installation glass chipping or breakage that can be explained as "standard wear and tear."

To ensure the best possible product quality and service while minimizing project delays, a BSI-authorized freight carrier must be utilized for all shipments containing Clearview UV-bonded food shields. All shipments must be inspected upon receipt for transit damage. Any damage must be noted on the carrier's copy of the bill of lading and to BSI within 24 hours of receipt. To assist in identification of transit damage, multiple view ports have been added to shipping crates.

### **STEALTH WARMERS**

BSI, LLC warrants the Stealth housing and warming element against material and workmanship defects for a period of two years from invoice date.

### **SLIMLINE LED LIGHT**

The Slimline LED light warranty covers the ballast for material and workmanship for a period of two years from invoice date. The LED bulb itself is not covered under warranty.

THERE ARE NO WARRANTIES EXCEPT AS STATED ABOVE, WHETHER EXPRESSED OR IMPLIED, INCLUDING, BUT NOT LIMITED TO, ANY WARRANTY OF MERCHANTABILITY OR FITNESS FOR A PARTICULAR PURPOSE. Warranties do not apply to products that have been altered in any way or to products subjected to misuse, abuse, neglect, accident, or damage in transit. Warranty is void if products are used, held, or stored in an unsupervised environment. BSI, LLC's liability shall be limited to product repair or replacement, or refund of purchase price issued at the discretion of BSI, LLC. BSI, LLC will not be liable, under any circumstances, for incidental or consequential damages (including, without limitation, to lost profits) arising in connection with the sale, use, inability to use, repair, or replacement of BSI, LLC's products. The liability of BSI, LLC arising from any cause shall not exceed the price paid for the products.

Any breach claim of the foregoing warranties shall be deemed waived unless submitted to BSI, LLC in writing within 30 days of alleged defect discovery date or by reasonable inspection should have been discovered. Merchandise must be returned to the BSI, LLC factory, freight prepaid, and will not be accepted unless a prior Return Merchandise Authorization (RMA) has been issued by BSI, LLC. A copy of the original invoice must accompany the returned merchandise to verify the original purchase date and warranty entitlement. Any cause of action for breach of the foregoing warranties shall be deemed waived unless brought within one year of claim submission.